

Chartered Banker.

Level 6 Professional Career Development Programme



Duration

24 months



Qualification achieved

CBI Advanced Diploma in Banking and Leadership in a Digital Age



Entry requirements

No specific entry requirements.



Eligibility criteria

- Your current role should be UK-based and you must have lived here for at least three years
- The programme must address development needs in your current role
- Your Line Manager must be able to support you throughout the programme

See rbs.bppuniversity.ac.uk for full details.



Cost

This programme is funded centrally by the Apprenticeship Levy. Your business area will have to fund travel and expenses to attend any face-to-face workshops and any exam resit costs.

You will not have to pay anything personally to study this programme.

Is this for you?

Chartered Banker is a 24-month degree level programme, designed for individuals who support the delivery of banking services to our customers, usually within Corporate, Commercial, Retail Banking or Private Banking. This programme includes the CBI Advanced Diploma in Banking and Leadership in a Digital Age and contains 3 pathways: Commercial Banking, Retail Banking and Operations.

What will you learn?

- Professionalism and ethics and the implications of professionalism and ethics for banking in a digital age.
- Commercial lending OR Personal and private banking environment in a digital age, considering the key drivers of change, the challenges faced, and the impact on banks and customers of technological developments and regulatory changes
- Risk and governance frameworks relevant in financial services and how these work in practice
- Bank risk management in a digital age, considering the types of risk that arise from the nature of banking, the trends that are shaping emerging risks, and the implications of these for the future of bank risk management
- Bank strategy, and analysis of the external and internal bank environment, evaluation of strategic options, develop strategy, and manage its implementation through effective leadership and management of operations

Commitment from you

You will need to dedicate time during working hours to complete this programme. This will include:

- Attendance at webinars
- Independent study and research
- Applying, reflecting and recording what you've learnt back at work

The amount of time required each week may vary depending on your programme workload. Full details on the weekly time commitments are available in the Learning Plan, which you will receive when you begin your programme.

How we support you

- You will be taught by experienced tutors who have worked in your industry
- You will have access to a Coach who is on hand to guide you through each stage of your learning journey, providing you with clear aims and objectives
- You will have access to a Virtual Learning Environment with all of your qualification content, additional learning resources and all the step-by-step support you need to be successful on this programme

For more information contact BPP:

pcdp@bpp.com

thenatwestgroup.bppuniversity.ac.uk

Progression upon completion

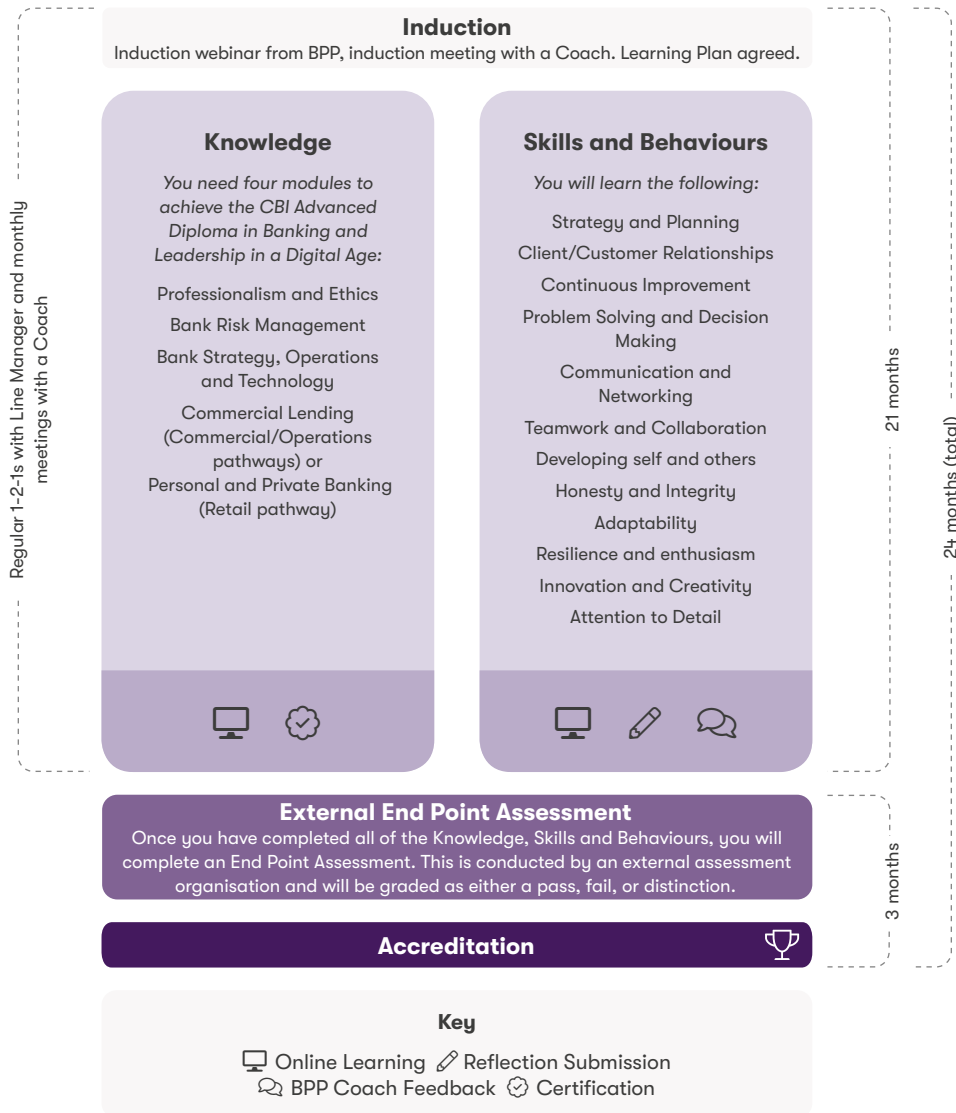
You will be eligible to apply for Chartered Banker status, providing you have three years' banking experience.

How do you apply?

- Speak to your Line Manager to ensure you have their support. Discuss the expected time commitment required during working hours and refer them to the people manager guide available on the PCDP portal
- Click **here** to apply online. You and your Line Manager will be asked to confirm you meet the eligibility criteria and that you can apply the learning in your current role

How is your programme structured?

This programme combines the knowledge from a professional qualification with the skills you'll need to demonstrate professionalism in your current role.



For more information contact BPP:

✉ pcdp@bpp.com

🌐 thenatwestgroup.bppuniversity.ac.uk

©BPP Professional Education Limited 2020. 06752

